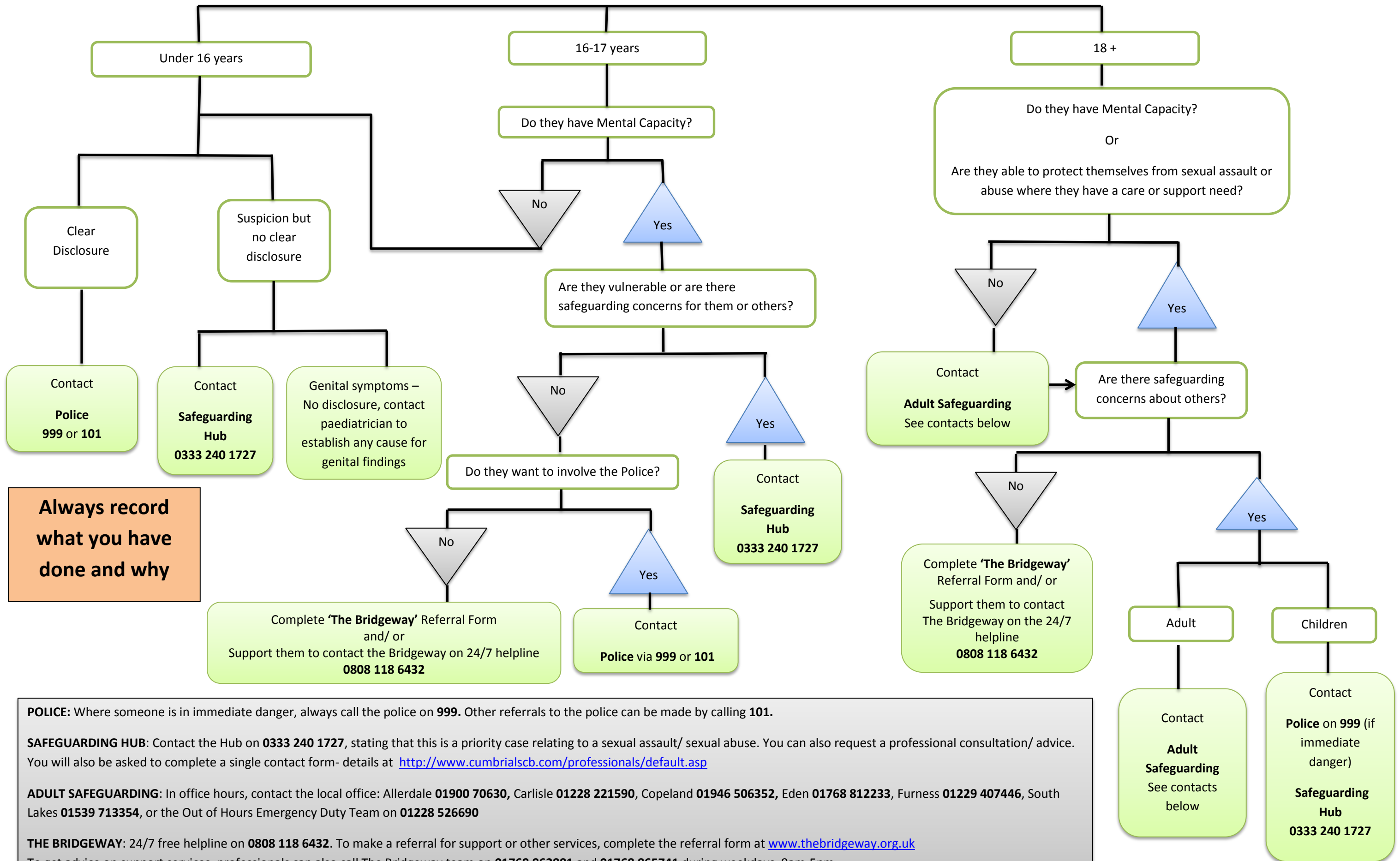


How old is the victim?



**Always record what you have done and why**

**POLICE:** Where someone is in immediate danger, always call the police on **999**. Other referrals to the police can be made by calling **101**.

**SAFEGUARDING HUB:** Contact the Hub on **0333 240 1727**, stating that this is a priority case relating to a sexual assault/ sexual abuse. You can also request a professional consultation/ advice. You will also be asked to complete a single contact form- details at <http://www.cumbrialscb.com/professionals/default.asp>

**ADULT SAFEGUARDING:** In office hours, contact the local office: Allerdale **01900 70630**, Carlisle **01228 221590**, Copeland **01946 506352**, Eden **01768 812233**, Furness **01229 407446**, South Lakes **01539 713354**, or the Out of Hours Emergency Duty Team on **01228 526690**

**THE BRIDGEWAY:** 24/7 free helpline on **0808 118 6432**. To make a referral for support or other services, complete the referral form at [www.thebridgeway.org.uk](http://www.thebridgeway.org.uk) To get advice on support services, professionals can also call The Bridgeway team on **01768 862881** and **01768 865741** during weekdays, 9am-5pm.

**PAEDIATRICIAN** – Contact the local hospital and ask for consultant paediatrician on call